



## **GE30 & GE30LH Edger**

# **Safety, Operations & Maintenance Instructions**

## INTRODUCTION

This manual contains information concerned with safe practices when operating the machine, safety precautions that are necessary during operation, maintenance instructions and troubleshooting.

Before operating the machine it is imperative to have read and understood this manual. The instructions of this manual are intended to be read and followed to ensure the proper running of the GE30 Edger and the safety of the user.

In the case of sale or transfer of the machine, this manual must be handed over. In the event that this manual is damaged or lost, the owner must ask the manufacturer or the former owner for a copy. This manual is to be considered as an integral part of the machine.

The information conveyed in this manual is reflective of the machine at point of sale. The manufacturer has the right to modify the machine for technical or commercial reasons and this does not make the manual unsuitable for use.

The copyright for this manual belongs to the manufacturer. The technical texts, images and pictures within this manual cannot be published or used, completely or in part, without written consent from the manufacturer.

# Contents

<b>INFORMATION ABOUT THE MACHINE .....</b>	<b>4</b>
<b>INTENDED USE OF GE30 EDGER .....</b>	<b>4</b>
<b>MACHINE DESCRIPTION .....</b>	<b>4</b>
<b>IDENTIFICATION OF MAIN PARTS .....</b>	<b>5</b>
<b>SPECIFICATIONS .....</b>	<b>6</b>
<b>SAFETY PRECAUTIONS .....</b>	<b>7</b>
<b>ACCIDENT PREVENTION MEASURES .....</b>	<b>7</b>
<b>SAFETY LABELS AND DESCRIPTIONS .....</b>	<b>8</b>
<b>AFTER A PERIOD OF INACTIVITY .....</b>	<b>9</b>
<b>OPERATING INSTRUCTIONS.....</b>	<b>10</b>
<b>BEFORE USE .....</b>	<b>10</b>
<b>DURING OPERATION.....</b>	<b>10</b>
<b>AFTER USE.....</b>	<b>11</b>
<b>GENERAL MAINTENANCE .....</b>	<b>11</b>
<b>ADJUSTMENT OF THE DRIVE BELT .....</b>	<b>11</b>
<b>CHANGING THE BLADE.....</b>	<b>11</b>
<b>BLADE GUARD ADJUSTMENT .....</b>	<b>12</b>
<b>TYRE PRESSURE.....</b>	<b>12</b>
<b>STORAGE.....</b>	<b>12</b>
<b>CLEANING .....</b>	<b>12</b>
<b>PARTS LIST .....</b>	<b>13</b>
<b>WARRANTY POLICY .....</b>	<b>14</b>
<b>MACHINE MAINTENANCE SCHEDULE .....</b>	<b>14</b>
<b>NOTES.....</b>	<b>15</b>

# **INFORMATION ABOUT THE MACHINE**

## **INTENDED USE OF GE30 EDGER**

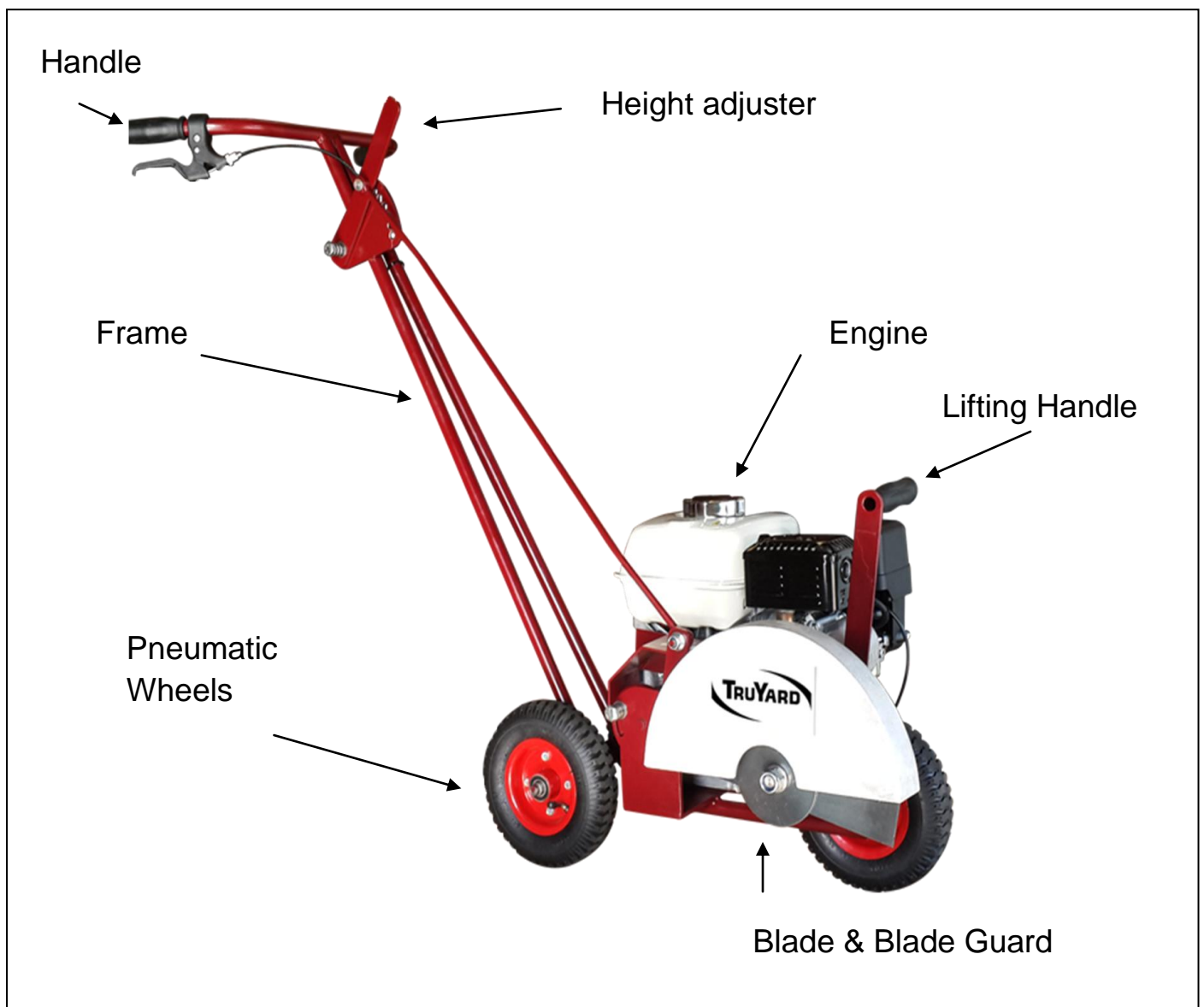
The Truyard GE30 Edger is designed to perfectly cut lawn edges for commercial applications.

## **MACHINE DESCRIPTION**

The GE30 Edgers consists of the following features:

- Pneumatic wheels to manoeuvre the machine
- A metal frame
- A Height Adjuster
- An Engine
- A 12" blade
- A Blade guard

## IDENTIFICATION OF MAIN PARTS



## SPECIFICATIONS

### GE30200

Engine Specifications		Transmission	
Engine	Honda GX200	Belt Drive	V Belt A Section
Engine Type	Petrol	No Load Starting Clutch	No
Cutting System		Machine Construction	
Blade Size	12"/30cm	Weight	57kg
Number of Blades	1	Chassis	Steel construction
Special Features		Wheels	Pneumatic 210mm with steel ball bearing
Warranty	Domestic Application 2 years, Commercial Application 3 Months		

### GE30200LH & GE30200C

Engine Specifications		Transmission	
Engine	Honda GX200	Belt Drive	V Belt A Section
Engine Type	Petrol	Centrifugal Clutch	Yes
Cutting System		Machine Construction	
Blade Size	12"/30cm	Weight	57kg
Number of Blades	1	Chassis	Steel construction
Special Features		Wheels	Pneumatic 210mm with steel ball bearing
Warranty	Domestic Application 2 years, Commercial Application 3 Months		

# SAFETY PRECAUTIONS

## ACCIDENT PREVENTION MEASURES



***STRICT ADHERANCE TO THE FOLLOWING RULES, PRECAUTIONS AND SAFETY MEASURES LISTED HERE MUST BE CONDUCTED TO AVOID THE DANGER OF ACCIDENT AND DAMAGE TO PEOPLE AND THE MACHINE.***

- 1) Ensure that the operator of the machine has read and understood fully this manual and the engine manual
- 2) Always wear suitable footwear. Do not use in bare feet
- 3) Always stop the engine and disconnect the sparkplugs when guards are not in place
- 4) Check that items to be edged are free of all foreign debris this includes and is not limited to nails, wire, ropes etc.
- 5) Do not allow children to come near the GE30 Edger. Always ensure that the children are at a safe distance and are well away from the machine
- 6) Do not put hands whatsoever inside the machine or near the belt or blade while the machine is running
- 7) Read the engine manufactures operating instructions carefully. Do not alter governor settings or over speed the engine
- 8) Carefully follow the refuelling safety instructions when refuelling the engine:
  - Always refuel the GE30 outdoors in a well ventilated area
  - Ensure the engine is turned off and cooled before beginning refuelling process.
  - Keep all ignition and heat sources clear of the refuelling area.
  - If spillage occurs mop up immediately and wait a suitable time so the fumes disappear
  - When storing fuel make sure it is in a suitably designed container (AS/NZS 2906:2001) and it is stored in a cool dry place.
- 9) Use your GE30 Edger only in daylight when visibility is good
- 10) When using the GE30 Edger slopes should be treated with caution. Never place the GE30 Edger on uneven ground
- 11) Never leave the GE30 Edger unattended whilst engine is running
- 12) Do not use GE30 Edger in confined spaces with no ventilation
- 13) It is advisable to wear safety glasses and hearing protection whilst operating the GE30 Edger
- 14) Always operate with all guards in place

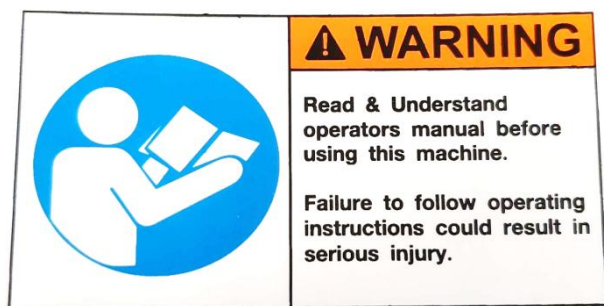
## SAFETY LABELS AND DESCRIPTIONS



**CAUTION** – keep hands and feet away from the discharge and inlet openings on the machine as this could cause injury





**CAUTION** – the operating of the engine, its maintenance and starting must be done after having read the manual to prevent any harmful incidents and misuse of the engine from occurring



**CAUTION** – ensure that the operator has read and understood this manual before operating the machine to prevent injury



 <p>KEEP HANDS AND FEET AWAY</p> 	<p><b>CAUTION</b> – keep hands and feet away from openings on the machine to prevent injury</p>
 <p>HOT MUFFLER CAN BURN YOU. Stay away if engine has been running.</p>	<p><b>CAUTION</b> – ensure you or anyone around you does not touch the hot muffler after use of the machine to prevent injury</p>
 <p><b>ROTATING BLADES</b></p> <ul style="list-style-type: none"> <li>• Do not operate without discharge chute fastened in place</li> <li>• Do not put hands in discharge chute</li> </ul>	<p><b>CAUTION</b> – ensure all guards are firmly in place and that hands and feet are kept away from the rotating blades in the machine to prevent injury</p>
 <p>Gasoline is highly flammable and explosive. Turn engine off and let cool before refueling.</p> <p>The engine emits toxic carbon monoxide. Do not run in an enclosed area.</p> <p>Read Owner's Manual before operation.</p>	<p><b>CAUTION</b> – when operating, make sure that the operator has fully read and understood the engine manual, do so in an open area and only refuel the machine once cool</p>

## AFTER A PERIOD OF INACTIVITY

Ensure the following checks have been done on the GE30 before operation after a long period of inactivity:

- Check that the machine is undamaged and all guards are attached
- Check all the mechanical parts of the machine are not rusty and are in working condition
- Ensure the blades rotate freely, are sharp and are connected to the machine
- Ensure that the engine has sufficient oil and fuel
- Check all nuts and bolts are tight

# OPERATING INSTRUCTIONS

## BEFORE USE

Before operating the machine it is important to ensure the following to use the machine to its full capability and to keep the operator and the surrounding area safe.

- Make sure that the operator has read and understood how to use the engine as per the manufacturer's instructions
- Ensure that the oil and fuel in the engine are as per the engines manufacturers instructions
- Check that all guards and parts are in place
- Ensure that the GE30 is located on flat, even ground and that there are no people or animals in the vicinity of its working function.
- Ensure that the operator has read and understood this manual, including how to control the machine
- Wear the prescribed safety equipment

## DURING OPERATION

Once satisfied that the above criteria have been met, turn on the engine as per the manufactures instructions. Once running:

- Oil and fuel engine as per engine manufacturers. Make sure height adjuster is at the top or highest so the blade does not make contact with the ground. Make sure the throttle control is at its lowest rev setting. The blade will turn as soon as the starter is pulled. With the Clutch version the blade will still be at an idle position until the centrifugal clutch engages. Keep hands and feet at a safe distance at all times.
- When the motor is running gently increase the throttle. With the optional clutch fitted increase the throttle until the clutch engages and the blade rotates.
- Gently lower the blade to the desired hole setting or depth. There are 7 hole settings with the bottom hole being the deepest the edger will cut.
- Push the edger along the line of garden edge you wish to cut. Take care and do not hit any foreign objects such as pavement or paving etc. Ensure you are cutting grass at all times.
- When finished edging put the engine back to idle with the throttle control and turn the engine off at the off switch. Read the engine manufacturers operating manual to familiarise yourself with turning off the engine. The blade will still be turning when the engine is idling.
- Regularly check tightness of the bolts and nuts on the entire machine. If anything is damaged replace immediately.

## AFTER USE


When you have finished operation of the machine and have turned the engine off:

- Allow machine to cool down
- Check the machine over to see if there are any irregularities that could impede your next use
- Check fuel and oil levels for next use

## GENERAL MAINTENANCE

For the servicing of the machine it is strongly recommended, for safety and quality of the maintenance, for this to be conducted by authorised professionals from Truyard authorised dealers who know the machine.

### ADJUSTMENT OF THE DRIVE BELT

	<p><b>WARNING:</b> Make sure the spark plug lead has been disconnected. Undo the two bolts on the blade flange. Pull the cutting head out so the belt is tight. Redo the bolts up. Do not over tighten drive belt</p>
--	---

### CHANGING THE BLADE

	<p><b>WARNING:</b> Make sure the spark plug lead has been disconnected. Put a Stiltson on the pulley in the inside of the blade guard. Undo the bolt on the end of the drive shaft. It is best to use a air gun to remove this. Be careful the blade might rotate while loosening or tightening.</p>
---	--

## BLADE GUARD ADJUSTMENT



**WARNING:** Make sure the spark plug lead has been disconnected. The blade guard can position can easily be adjusted by loosening the bolt under the guard. Move it to the desired position and re-tighten. Do not over inflate the pneumatic wheel. Maximum PSI is 18.

## TYRE PRESSURE

The maximum tyre pressure for the pneumatic tyres is 18psi. Over inflation of the tyre can cause injury.

## STORAGE

In the case that the GE30 Edger will not be used for an extended period, it is important to store the machine in a location that is sheltered from the weather to avoid damages to the machine.

The storage temperate recommended is between 0°C and 50°C.

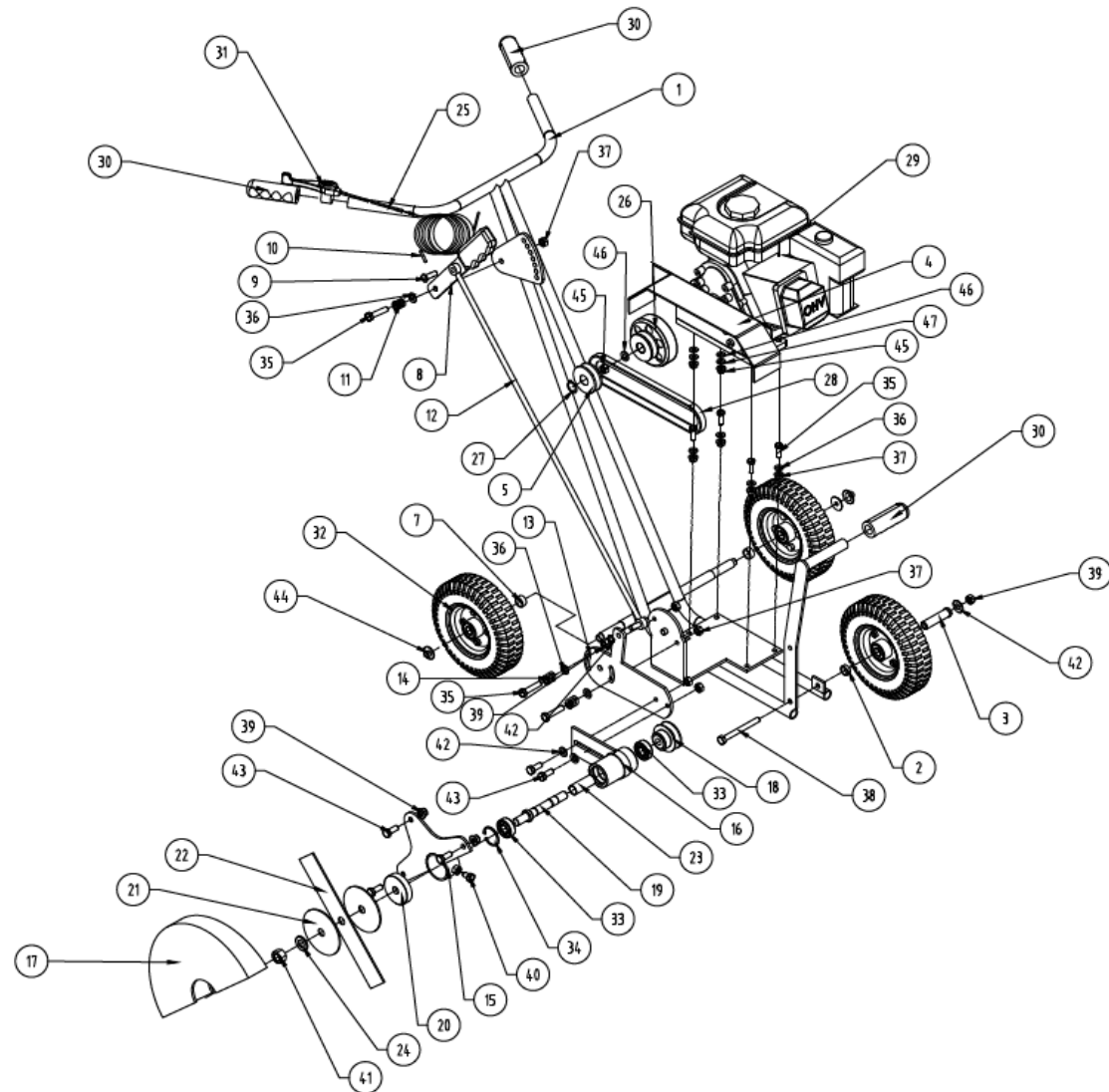
Before this period in storage, it is recommended to:

- Properly clean the machine
- Ensure that the area in which the machine is to be stored is sheltered is a flat and compact surface
- Perform a check of the machine to detect possible damages or irregularities and to ensure that the safety labels are undamaged and clearly visible

## CLEANING

Regularly clean the machine using only compressed air, blowing away wood dust and green was residue. For this operation ensure that you wear protective gloves and eyewear.

PARTS LIST



NO.	PART NO.	DESCRIPTION	QTY
1	1503010	FRAME	1
2	1503011	FRONT WHEEL BUSH	1
3	1503012	FRONT WHEEL BUSH	1
4	1503013	BELT GUARD	1
5	1501061	MOTOR PULLEY	1
7	1503016	REAR WHEEL SPACER INSIDE	2
8	1503017	HEIGHT ADJUSTER LEVER	1
9	1503018	PIN	1
10	1503019	ROD PIN	1
11	1503020	SPRING	1
12	1503021	HEIGHT ADJUSTER ROD	1
13	1503022	BLADE ASSEMBLY SUPPORT	1
14	1901450	SPRING	2
15	1503024	BLADE GUARD SUPPORT	1
16	1503025	BEARING HOUSING	1
17	1503026	BLADE GUARD	1
18	1503027	BLADE PULLEY	1
19	1503028	SHAFT	1
20	1503029	BEARING SHIELD	1
21	1503030	BLADE WASHER	2
22	1503031	BLADE	1
23	1503032	BUSH	1
24	1503033	SPACER	1
25	1901675	THROTTLE CABLE	1
26	1901624	CLUTCH (OPTIONAL)	1
27	1901413	CIRCLIP	1
28	1901617	BELT	1
	1901611	BELT CLUTCH MODEL	
29	-	ENGINE	1
30	1901628	HANDLE GRIP	3
31	1901671	THROTTLE LEVER	1
32	1901011	WHEEL	3
33	1901505	BEARING	2
34	1901412	CIRCLIP	1
35	1901103	BOLT M8X40	7
36	1901300	WASHER M8	7
37	1901230	NUT M8	7
38	1901116	BOLT M10X100	1
39	1901210	NUT M10	6
40	1901114	BOLT M10X20	1
41	1901220	NUT M16XTR2.0	1
42	1901310	WASHER M10	5
43	1901115	BOLT M10X25	5
44	1901414	WHEEL CLIP	2
45	1901236	BOLT 5/16X1" UNF	2
46	1901302	WASHER M8 MUDGUARD	3
47	1901301	WASHER STAR M8	2

GE30

**TruYARD**

# WARRANTY POLICY

Under the warranty your GE30 is warranted for 2 years from the date of purchase against mechanical defects, faulty workmanship or material. 90 days for commercial use. This warranty covers only the replacement, repair or adjustment of any part which fails as a result of a fault in manufacture or assembly. Defective parts will be repaired or replaced without charge for labour or materials subject to the conditions detailed below.

Warranty Exclusions, Limitations and Rights:

- 1) Any failure that results from accident, abuse or neglect is not covered by this warranty
- 2) Transport of the GE30 to and from the manufacturer, their agents or dealers, to be paid for by the owner
- 3) Proof of purchase date must be provided prior to the commencement of the warranty work
- 4) Any failure of parts or material that is contributable to fair wear
- 5) Any indirect or consequential loss, damage, costs or expenses suffered by the consumer that may result either directly or indirectly from the failure or malfunction of the product
- 6) Any repairs carried out other than those by authorised Truyard agents or dealers cancel this warranty
- 7) Engine warranty is separate and is in accordance with the Engine manufacturers express warranty

## MACHINE MAINTENANCE SCHEDULE

Bolt tightening check	Inspect every 5 hours of use
Replacement of the Edger blades	Inspect blade for sharpness, burs and chips every 10 hours of use. If the blades are damaged replaced.
Belt adjustment or replacement	Inspect belt every 10 hours of use looking for cracks and tightness. If cracks appear replace the belt
Engine oil and other respective parts	Consult the manufacturers manual for these specifications

## NOTES

[illegible]